

Radiation Protection Consulting Services

Building a Radiotherapy, a Nuclear Medicine or a Cyclotron Centre

If you're willing to open a Radiotherapy and/or a Nuclear Medicine unit, you probably came across with some particularities that might difficult the project kick off.

Issues like the service concept, shielding design and legal requirements are mandatory to put everything in place to begin.

The detail and complexity of these issues could be an obstacle in the project. That's why we put our team at your disposal.

Concept

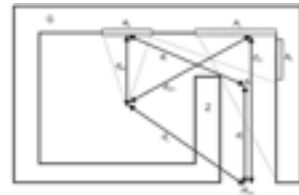
Support in:

- ✓ setting areas for the heavy equipments and their needs;
- ✓ design of the work spaces and areas, with special attention to radiation safety and protection;
- ✓ design of the optimal option for patients and professionals circuits;
- ✓ construction, equipment, material and human resources needs.

Shielding Design

- ✓ Setting up a Radiotherapy service it is not the same as setting up a Nuclear Medicine service. Each one has it's own particularities, depending on the nature of the technics that you would like to do;
- ✓ We have an experienced physicists and technicians team that can easily handle these challenges;

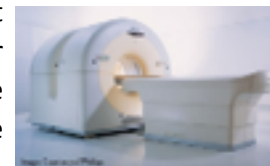
- ✓ Shielding design will depend on a variety of factors, that have to be evaluated together in order to guarantee patients,



professionals and environment radiation safety and protection;

- ✓ Shielding design includes BUNKERS for Linacs as well as for Radiopharmacies, PET/CT, PET/MRI and Gamma-Cameras;

- ✓ The commitment is that your project will be optimized before construction,

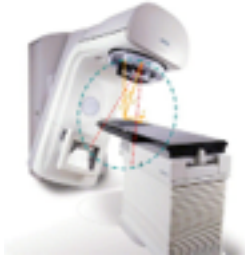


which means that you won't need to perform post construction corrections to start the clinical activity.

Legal Requirements

- ✓ Working with heavy equipments demands some precautions;
- ✓ Working with radiations even more;
- ✓ For Nuclear Medicine you should add radiopharmaceuticals preparation and administration requirements.
- ✓ We can support our customers by doing the legal integration of the project, ensuring that everything that the legal framework in your country requires will be taken into account.

- ✓ This is a key point of the project to avoid future problems with supervising authorities.



We can help you dimensioning the team and finding the best professionals. We can be on-site working together with your team (hands-on training), during the Go-live phase of your project.

Do we need more equipments, besides the heavy ones?

Radiotherapy and Nuclear Medicine services will need some other smaller equipment to support all the activity. We can lead you in that matter and help you making informed decisions.



Frequently asked questions

How much time is needed to perform the concept and shielding project?

Once we have all the details and discussions with your project team, we need to perform calculations and design circuits. We schedule between two to three weeks' time for that.

And if our engineers have some doubts?

No problem. We will be at your disposal in order to help the team executing the plan.

We have to obtain some kind of licensing to open the units?

This process has some differences in each country, but in the majority, yes, there is a legal obligation to do that. We can prepare all the process or support you to do so.

We will have an inspection before opening. Is your team available to make a pre-verification?

We can organize an on-site audit in order to verify if all the project statements were carefully applied. We can also point out improvement opportunities to help you deliver the best quality service possible.

Concerning the human resources, how much professionals do we need to start clinical practice?

It depends on the number of equipments and technics that you would like to perform. It also depends on the seniority of the professionals.

Mercurius Health is a Portuguese Company, leader in Medical Physics and Radiation Protection Consultancy, running 16 Radiotherapy and Nuclear Medicine projects. With 15 years of experience, Mercurius Health employs today more than 100 experts.

Mercurius Health is a Portuguese company focused in technical cooperation, consultancy, on-site operation and training in actual or prospective centers seeking for **edge solutions** in **Radiotherapy, Nuclear Medicine & PET** or **Cyclotron** based Radiopharmaceutical production.

With strong expertise proven for more than a decade, Mercurius Health integrates **multidisciplinary teams** of Medical Physicists, Dosimetrists, Radiation Protection Officers, Technologists, Physicians and experts in Radiochemistry/Radiopharmacy, able to fully operate a Center, to fulfill a specific need and/or to train local teams on-the-job.